

Countertop Water Filter

Model: HF123

Turn tap water into drinkable water immediately!



Output: Approx.2L/min (0.2MPa)

Working Pressure: 0.1~0.4MPa

Operating temperature: 5-45 °C

Weight: Approx.2.1 kg

Dimensions: 30×10.1×32 cm

Cartridge Capacity: 10,000 Liters

(Depending on water quality)

Material: ABS plastic, Ceramic, Nano-metal

clusters (NMC) media, Activated carbon,
Ion exchange resin

Working stage:



MF Ceramic+ Special Function Cartridge

Stage 1 MF Ceramic

Patent No.: ZL 200410091808.1

Removes rusts and suspended contaminants

Stage 2 Nano-Metal Clusters Media

Patent No.: ZL 200610034167.5

Removes residual chlorine, heavy metal ions (Pb^{2+} , Cd^{2+} , Cr^{6+}), etc., inhibits bacteria growth

Stage 3 Activated Carbon

Removes organic pollutants, chemicals and disinfection by products, unpleasant taste and odor



Multi-function Cartridge

Stage 4 Cation Exchange Resin

Decreases the scale and the hardness

Stage 5 Anion Exchange Resin

Removes NO_3^- , NO_2^- in water

This unit can be selected as following:



Built-in Membranes Ceramic Cartridge

Stage 6 Built-in Membranes Ceramic Cartridge

Patent No.: ZL 200610037301.7

Removes bacteria and suspended contaminants

Pore size down to 0.2 micron

Stage 7 Post Activated Carbon

Removes unpleasant taste and odor

Stage 8 Nano-Metal Clusters Media

Patent No.: ZL 200610034167.5

Remove residual chlorine, heavy metal ions (Pb^{2+} , Cd^{2+} , Cr^{6+}), etc.

Inhibits bacteria growth

Features:

- Entirely remove bacteria with 100nm ceramic membranes cartridges filter system
- Special filter element can be selected depending on water quality
- NMC removes heavy metal ions and inhibits bacteria growth
- Filtrated water is drinkable water with 8 stages filtration
- Keep the minerals and microelements in water

Removes:

- Bacteria · Dusts · Residual chlorine · Heavy metal ions · Algae · Worms
- Organic pollutants · Disinfection by-products · Contaminants · Unpleasant tastes
- Giardia · Cryptosporidium · Scale · As^{3+} , F^- , NO_2^- , NH_4^+ , etc



Tap water output

Drinking water output

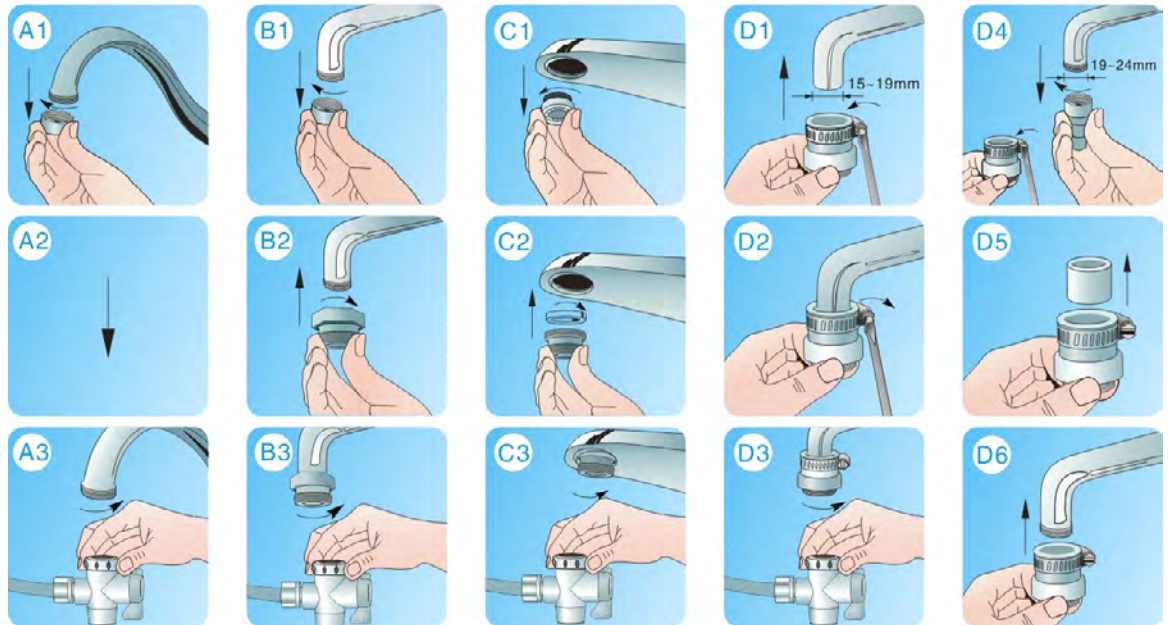
Washable replacement cartridges:

- Ion exchange resin: Decreases the hardness
- Activated carbon: For the better tasting water
- Special media: Remove As^{3+} , F^- , etc.



Installs easily

Fits most standard faucets



Packing detail:

Packing List:



Model: HF123

Inner box packing size: 33*10.5*33.5 cm

Outer carton size: 53*34*35 cm (5pcs)

N.W/G.W: 13.0/14.0 kg

Qty in 20' Gp: 1900 pcs

Qty in 40' Gp: 4300 pcs



GUANGZHOU PUREEASY HI-TECH CO., LTD

Building 1, No. 52 Nanxiang 3 Road, Science city,
Guangzhou, China.

Tel.: +86-20-32057423

Fax: +86-20-32068635

Email: sales@pureeasy.com

Web: www.pureeasy.com

<http://pureeasy.en.alibaba.com/>